



# GRAPHITE™ v8

*Computer-aided drafting the way it should be.™*

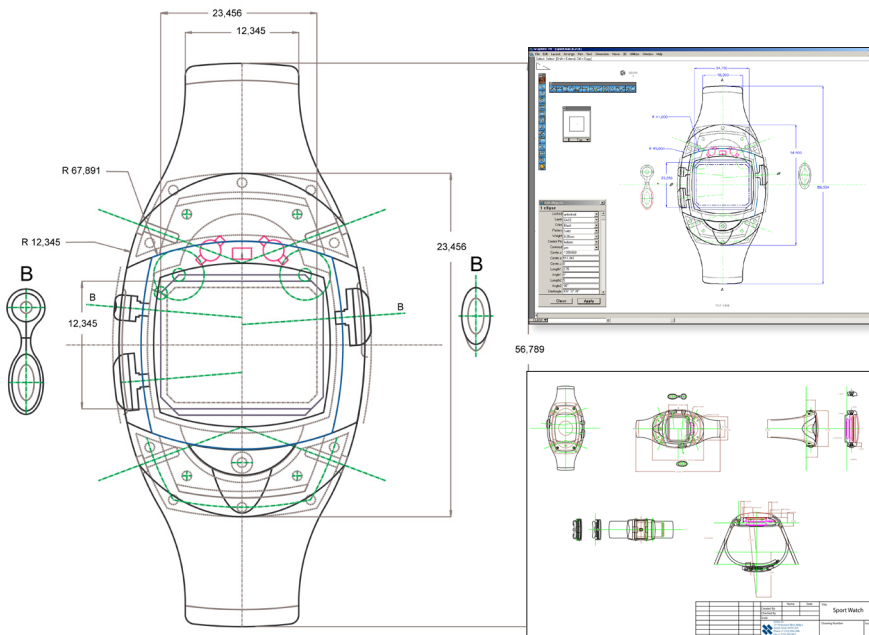
- Updated Interface
- Effortless and Fast Precision Drafting
- Easier to Learn and Faster to Use
- Accurate 2D and 3D Drafting to 16 Digits
- Intuitive Vellum® Interface
- Revolutionary Vellum Drafting Assistant for Intelligent Snaps and Automatic Alignments in X, Y, and Z
- Unique Hybrid Mac/Windows Office/Home Licensing
- Advanced 2D and 3D Equation-driven Parametrics
- Intelligent, Parametric Symbols from any Geometry
- Multiple Sheet/Model Drawings
- Compatible for Intel Mac and Windows Vista
- Over 10,000 Architectural and Mechanical Symbols with Preview Panel
- Flexible and Dynamic Dimensioning to ANSI, JIS, ISO, BAE, DIN, and ASME
- GD&T Standards
- Multiple Dynamic Views
- True 32-bit, Seamless Macintosh and Windows Compatibility
- Precision Import/Export Translators Including IGES and DXF
- Bill of Materials
- 2D Analysis: Area, CG, Moments
- Dynamic Detail Views
- Spellcheck

## General Features

- Direct Multi-sheet PDF Creation
- 16 Place Floating Point Accuracy
- Hybrid Mac/Windows Office/Home Licensing
- Infinite Pan and Zoom
- 256 Layers with Grouping Control
- 234 Colors, 170 User-definable from a Palette of 16.7 Million
- Unlimited Drawing Size
- Unlimited Number of Objects
- Multiple Sheet Views

## User Interface

- Updated, Intuitive Vellum Interface
- Drafting Assistant™ for Automatic Snaps and Alignments
- Smart Cursor Changes Shape Indicating Active Tool and Operations
- Tear-off Tool Palettes
- Strokes and Short Cuts Provide Instant Access to Commands
- Status Line to Specify Object Parameters
- Message Line Provides Tool Feedback, Instructions, and Options
- Edit Objects Dialog Box
- World and User-defined Coordinate Systems
- All Data Entry Fields can Perform Numeric Calculations
- Object Grouping and Locking
- TrackBall for View Selection and Dynamic or Cube Rotation
- Scroll Wheel Zoom and Spacebar Panning
- Axis Locking
- Orbit Tool
- Nudge Tool Moves Selected Items a User-definable Distance
- Selection Mask for Easier Selection of Specific Entity Types
- Grid (User-definable)
- Layer Manager
- Macros to Assign Keys or Strokes to Repetitive Tasks
- Ten Localized Languages



Luc Heiligenstein designed this sports watch using both Ashlar-Vellum drafting and 3D modeling software.

*"Graphite has an intuitive way for visual people to create something without going through a ton of calculations to achieve a tangible result."*

Read more about Luc's success at [www.Ashlar.com/success](http://www.Ashlar.com/success).



# GRAPHITE™ v8

## Selection Tools

- Fence
- Crossing/Intersecting Line
- Enclosed Polygon
- Automatic Boundary Detection

## Drawing Tools

- Wireframe Creation Tools:
  - Point
  - Line
  - Connected Line
  - Mid-point Line
  - Arc
  - Circle
  - Ellipse
  - Rectangle
  - Polygon
  - Through-point Spline
  - Vector Spline
  - Extrude
  - Revolve
  - Smart Walls
- Wireframe Editing Tools:
  - Fillet
  - Chamfer
  - Trim
  - Relimit
  - Break
  - Offset
- Add Spline Points
- Modify Spline Slope
- Intersect Two Curves
- Construction Lines
- Offset, Divide
- Insertion of Architectural Symbols in Smart Walls with Auto Healing
- Auto Healing of Intersections in Smart Walls

## 2D Drawing Creation

- Customizable Layouts
- Smart Dimension Tool Automatically Creates the Appropriate Dimensions
- Dimensions:
  - Linear
  - Angular
  - Diametric
  - Radial

- Baseline Method
- Chain Method
- Ordinate (Datum Method)
- Circle Center Marking
- Standard and User Definable Tolerances and Settings (ANSI, DIN, ISO, JIS, Dual, Architecture, and Stacked Fraction)
- Hatch and Fill Patterns
- Line Weights, Colors, and Styles
- Geometric Dimensioning & Tolerancing (GD&T)
- Dynamic or Static Dimensioning

## 2D Analysis

- Perimeter
- Area
- Weight
- Centroid
- Moments of Inertia

## Parametric Constraints

- 2D/3D
- Equation-driven
- Creates Smart Formula-driven Symbols

## Symbol Libraries

- Mechanical
- CAD
- ANSI
- DIN
- Reference of Instances Offers Updates Upon Reentry
- Thousands Included
- Panel Provides Click-through Viewing of All Directories Prior to Loading

## Views

- Multiple
- 3D
- Detail
- Dynamically Linked

## Additional Drafting Tools Batch File Conversions

- Automated Bill of Materials
- Symbols Panel
- Multiple Sheets per Document
- Spell Check Includes User Dictionary and Many Foreign Languages
- Navigator Palette
- Plotter Font
- Models
- Movie (Mac only)
- Pen Style Palette
- Via Convert Command
- Per Directory

## Localized User Interface

- English (US)
- English (UK)
- French
- German
- Italian
- Japanese
- Portuguese
- Spanish
- Swedish
- Russian (Windows only)

## Text Tools

- Text:
  - Multi Line or Paragraphs
- Autotext Forms
- Normal
- At an Angle
- Set Font, Size, Color

## General Transform Tools

- Move
- Linear Duplicate
- Rotate
- Polar Duplicate
- Scale (Uniform)
- Mirror

## Import/Export

- DWG/DXF (Up to 2007)
- PDF (Export Only)
- IGES
- EPS
- Spline (Import Only)
- ASCII Text
- Claris CAD (Import Only)
- BMP (Windows only)
- WMF (Windows only)
- PICT (Mac Only)
- Attributes

## PDF Integration

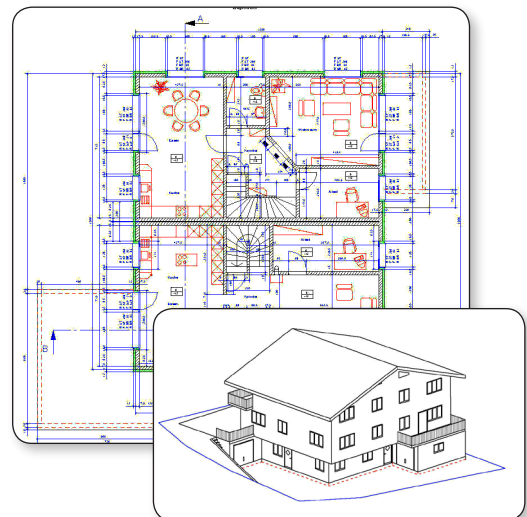
- Direct (Generates Non-tessellated Arcs)
- Multi-sheet
- Imbedded Exports Optional

## Available Accessories

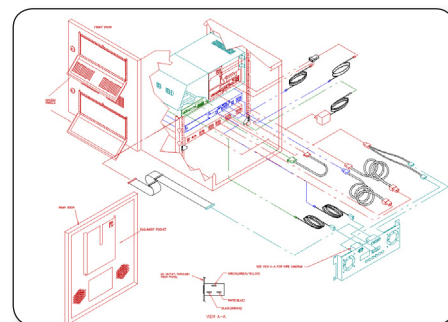
- Graphite Share™ for Viewing, Printing and Exporting at Client or Manufacturing Site (Free)
- Apple Mac OS X Tiger Spotlight Plug-in (Free)
- Graphite Tips & Tricks Book
- Tutorials (Free)

## Recommended System

- Windows / Macintosh
- Windows XP/Vista/7
- Mac OS X 10.4, 10.5 or 10.6 (PPC or Intel)
- 256 MB RAM
- 250 MB Free Hard Drive Space
- DVD Drive or High Speed Internet Connection



Alpine house by **Walter Arnold**, Arnold CAD.



Cable assembly diagram by **Curt Warfield** of TechniRep, Inc.

*"I quickly learned how to be more fluid in Graphite. I was able to make a complicated machine layout and derive detail drawings faster and easier than I could ever have done on a drawing board."*

**John Bicht**, Versalab.

**Creative Intuition**  
Powered by **Vellum™**

